

EVACUATION DIAGRAM



Accommodation Block 1 - Ground Floor



Phone: 1300 TEAM DFI
emergencyevacuationdiagrams.com.au

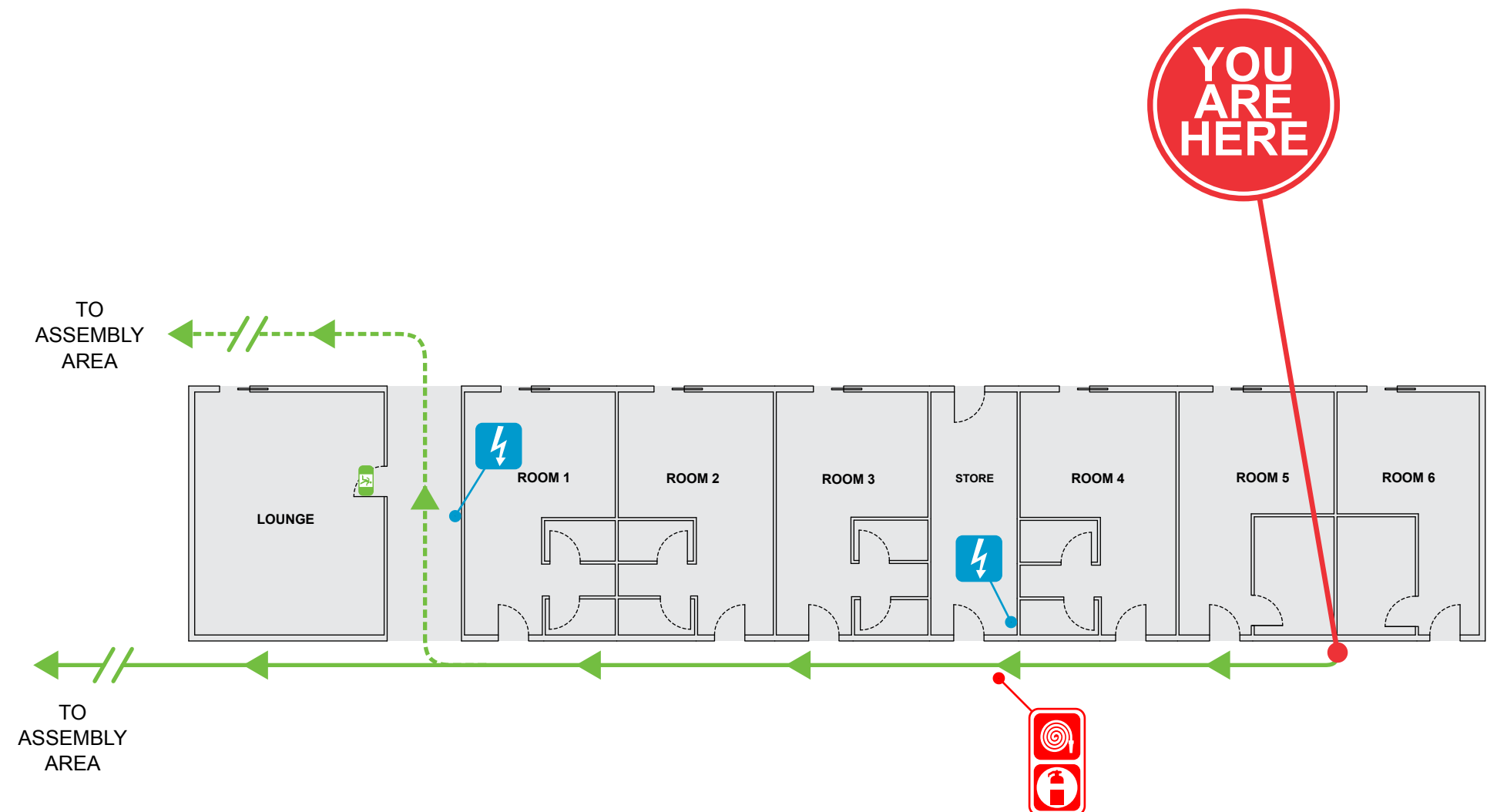
- Follow all instructions given by Wardens or Fire Officers
- Leave immediately by the nearest safe exit
- Move quickly, do not run
- If possible, close doors behind you
- Report to your designated Assembly Area
- Advise a Warden immediately if you are aware of people trapped in the building
- Do not leave the Assembly Area until the Chief Fire Warden give the 'All Clear'
- If any injuries are sustained, notify a Warden

IN CASE OF A FIRE OR EMERGENCY - Remain CALM

- R REMOVE PEOPLE** from immediate danger AREA
- A ALERT** nearby staff & members of the public and call 000
- C CONFINE FIRE & SMOKE** close doors and windows (if safe to do so)
- E EXTINGUISH** and control the fire (if safe to do so)
Evacuate to Assembly Area

FOR ALL EMERGENCIES
0000

Warrambui Retreat & Conference Centre
322 Greenwood Rd, Murrumbateman NSW



Distribution Board

Hose Reel

Dry Chemical Powder

Exit Sign

Alternate Evacuation Path

Evacuation Path

Assembly Area