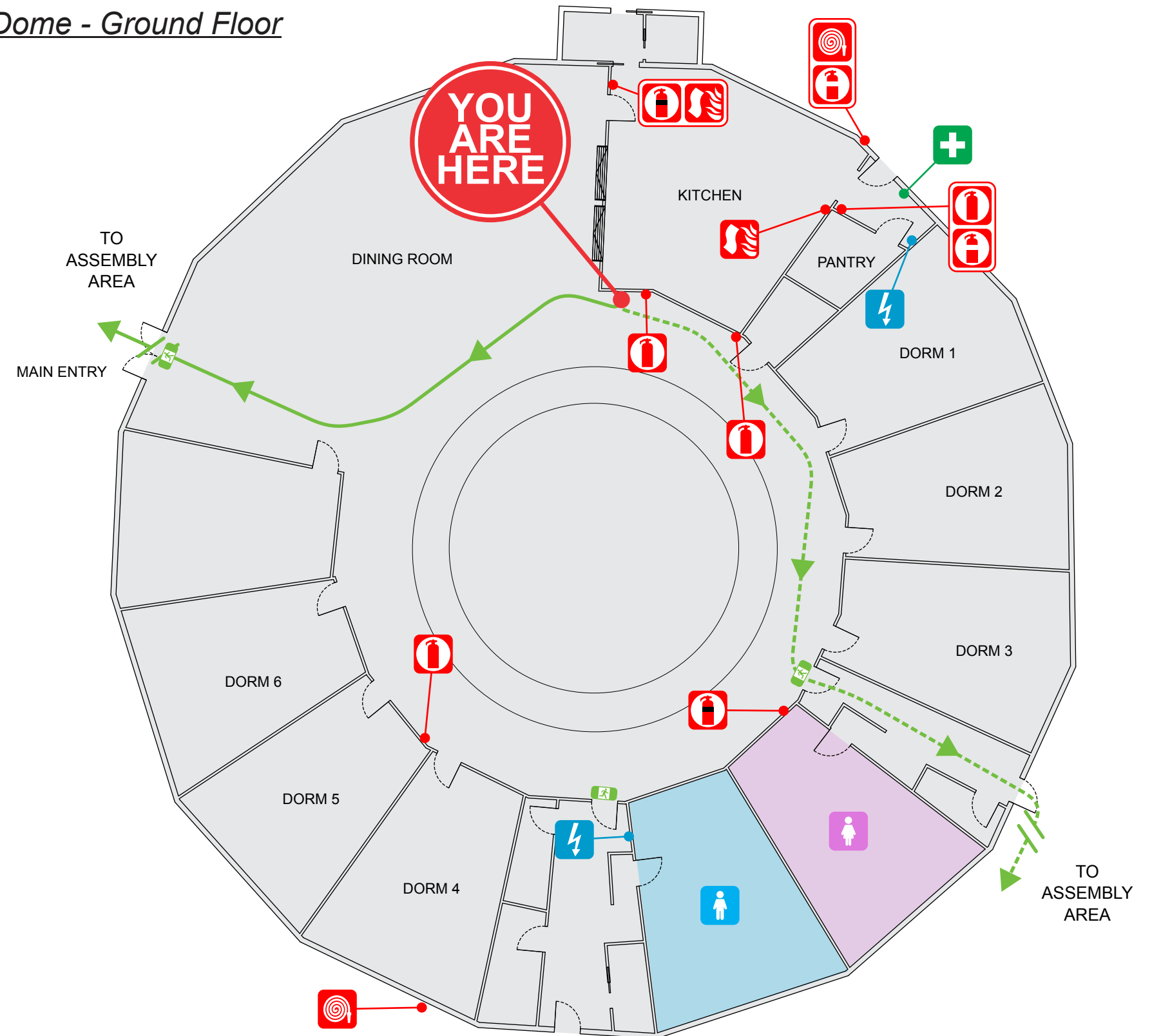


EVACUATION DIAGRAM



The Dome - Ground Floor



Distribution Board	Water	Hose Reel	Amenities Female	Amenities Male	Dry Chemical Powder	Carbon Dioxide
Fire Blanket	First Aid Point	Exit Sign	Alternate Evacuation Path	Evacuation Path	Assembly Area	

Issue Date: 10/2019

Review Date: 10/2024

© Dynamick Fire Installations PTY LTD



Phone: 1300 TEAM DFI
emergencyevacuationdiagrams.com.au

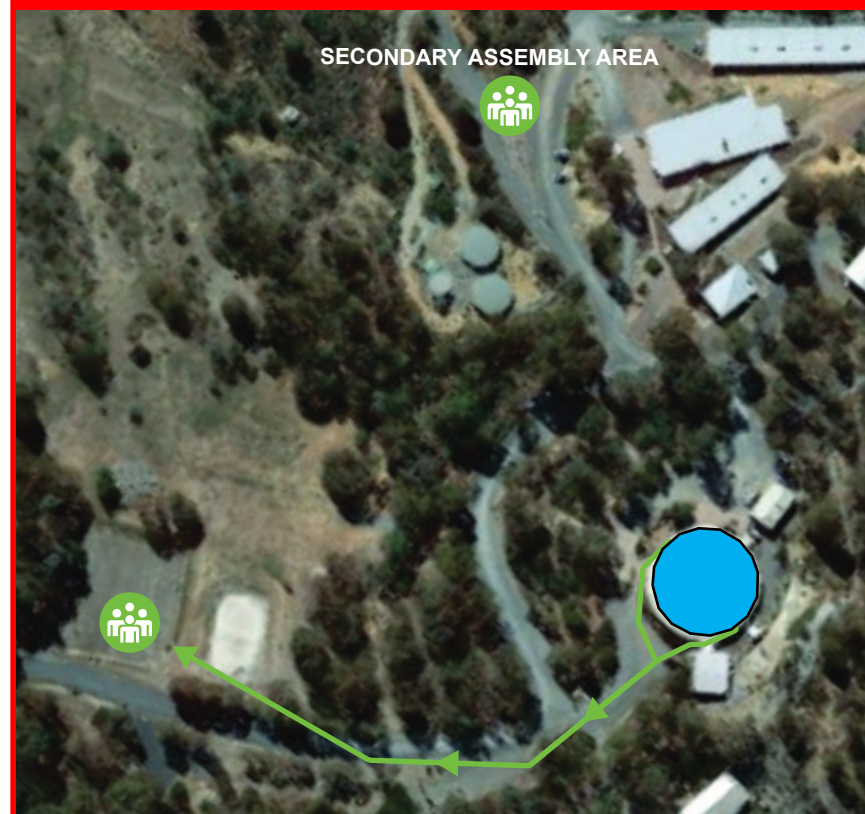
- Follow all instructions given by Wardens or Fire Officers
- Leave immediately by the nearest safe exit
- Move quickly, do not run
- If possible, close doors behind you
- Report to your designated Assembly Area
- Advise a Warden immediately if you are aware of people trapped in the building
- Do not leave the Assembly Area until the Chief Fire Warden give the 'All Clear'
- If any injuries are sustained, notify a Warden

IN CASE OF A FIRE OR EMERGENCY - Remain CALM

- R REMOVE PEOPLE** from immediate danger AREA
- A ALERT** nearby staff & members of the public and call 000
- C CONFINE FIRE & SMOKE** close doors and windows (if safe to do so)
- E EXTINGUISH** and control the fire (if safe to do so)
Evacuate to Assembly Area

FOR ALL EMERGENCIES
0000

Warrambui Retreat & Conference Centre
322 Greenwood Rd, Murrumbateman NSW



DFI Ref: AG - YAH - 1