

EVACUATION DIAGRAM



Phone: 1300 TEAM DFI
emergencyevacuationdiagrams.com.au

- Follow all instructions given by Wardens or Fire Officers
- Leave immediately by the nearest safe exit
- Move quickly, do not run
- If possible, close doors behind you
- Report to your designated Assembly Area
- Advise a Warden immediately if you are aware of people trapped in the building
- Do not leave the Assembly Area until the Chief Fire Warden give the 'All Clear'
- If any injuries are sustained, notify a Warden

IN CASE OF A FIRE OR EMERGENCY - Remain CALM

- R** REMOVE PEOPLE from immediate danger AREA
- A** ALERT nearby staff & members of the public and call 000
- C** CONFINE FIRE & SMOKE close doors and windows (if safe to do so)
- E** EXTINGUISH and control the fire (if safe to do so)
Evacuate to Assembly Area

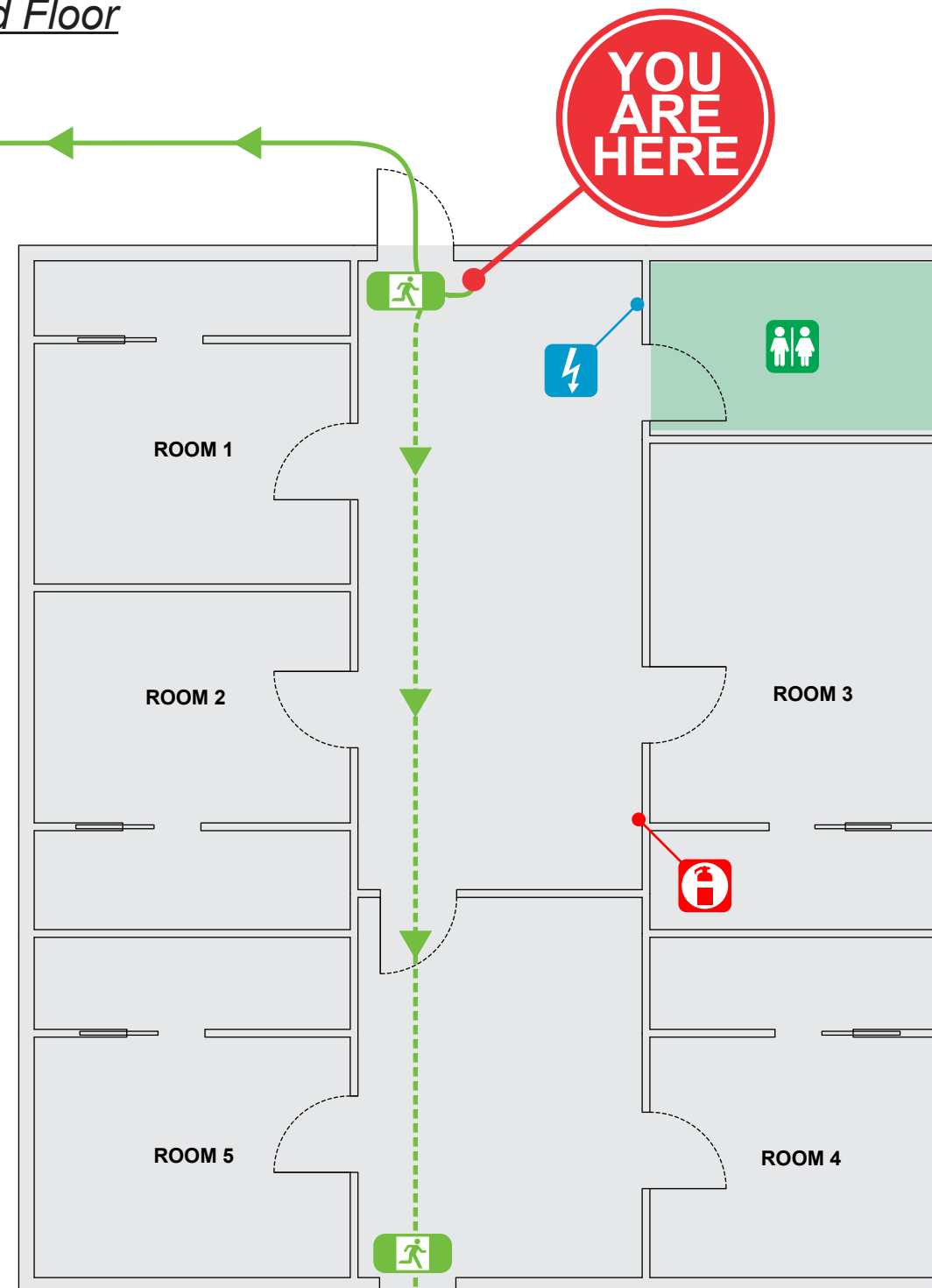
FOR ALL EMERGENCIES
0000

Warrambui Retreat & Conference Centre 322 Greenwood Rd, Murrumbateman NSW



The Cube - Ground Floor

TO
ASSEMBLY
AREA



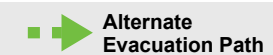
TO
ASSEMBLY
AREA



Issue Date: 11/2019



Review Date: 11/2024



© Dynamick Fire Installations PTY LTD