

# EVACUATION DIAGRAM



## Accommodation Block 2 - Ground Floor



Phone: 1300 TEAM DFI  
emergencyevacuationdiagrams.com.au

- Follow all instructions given by Wardens or Fire Officers
- Leave immediately by the nearest safe exit
- Move quickly, do not run
- If possible, close doors behind you
- Report to your designated Assembly Area
- Advise a Warden immediately if you are aware of people trapped in the building
- Do not leave the Assembly Area until the Chief Fire Warden give the 'All Clear'
- If any injuries are sustained, notify a Warden

### IN CASE OF A FIRE OR EMERGENCY - Remain CALM

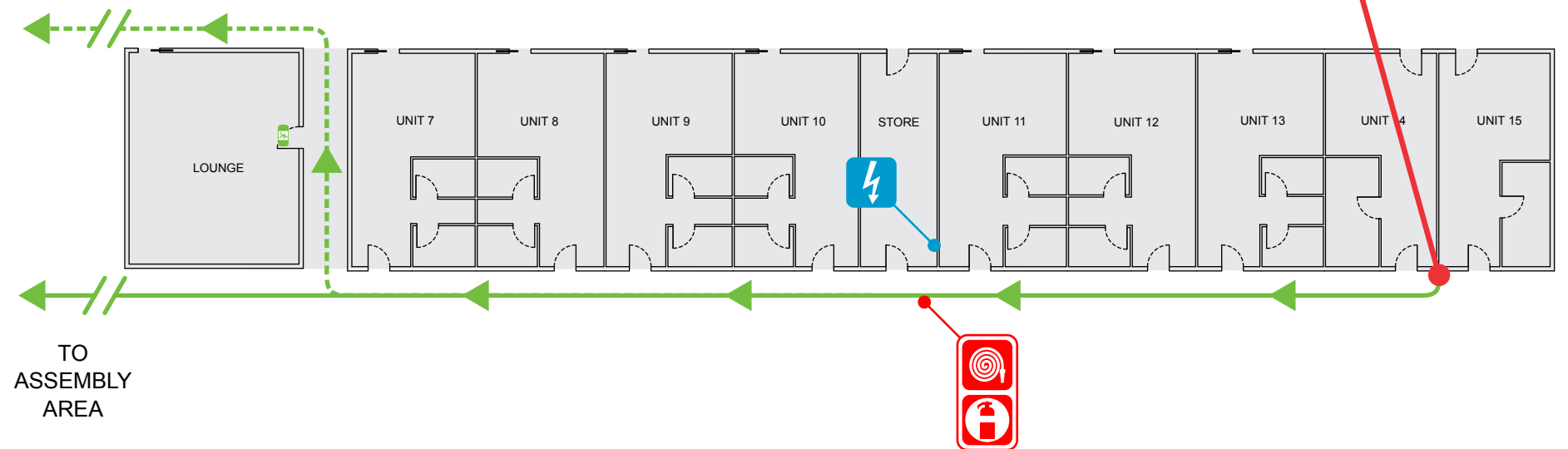
- R REMOVE PEOPLE** from immediate danger AREA
- A ALERT** nearby staff & members of the public and call 000
- C CONFINE FIRE & SMOKE** close doors and windows (if safe to do so)
- E EXTINGUISH** and control the fire (if safe to do so)  
Evacuate to Assembly Area

**FOR ALL EMERGENCIES**  
**0000**

### Warrambui Retreat & Conference Centre 322 Greenwood Road, Murrumbateman NSW



TO  
ASSEMBLY  
AREA



Hose Reel



Distribution Board



Dry Chemical Powder



Exit Sign



Alternate Evacuation Path



Evacuation Path



Assembly Area