

EVACUATION DIAGRAM



Accommodation Block 3 - Ground Floor



Phone: 1300 TEAM DFI
emergencyevacuationdiagrams.com.au

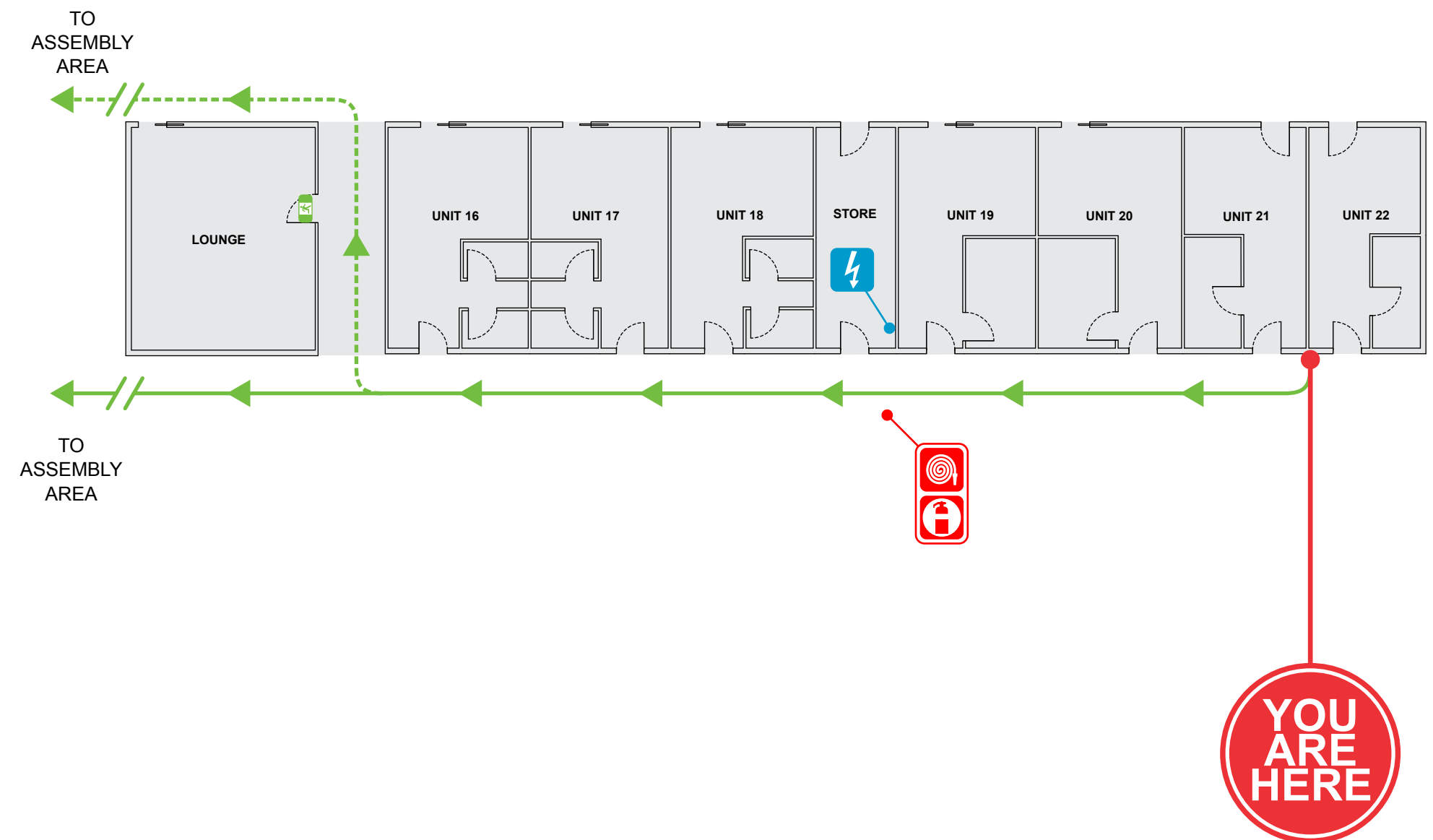
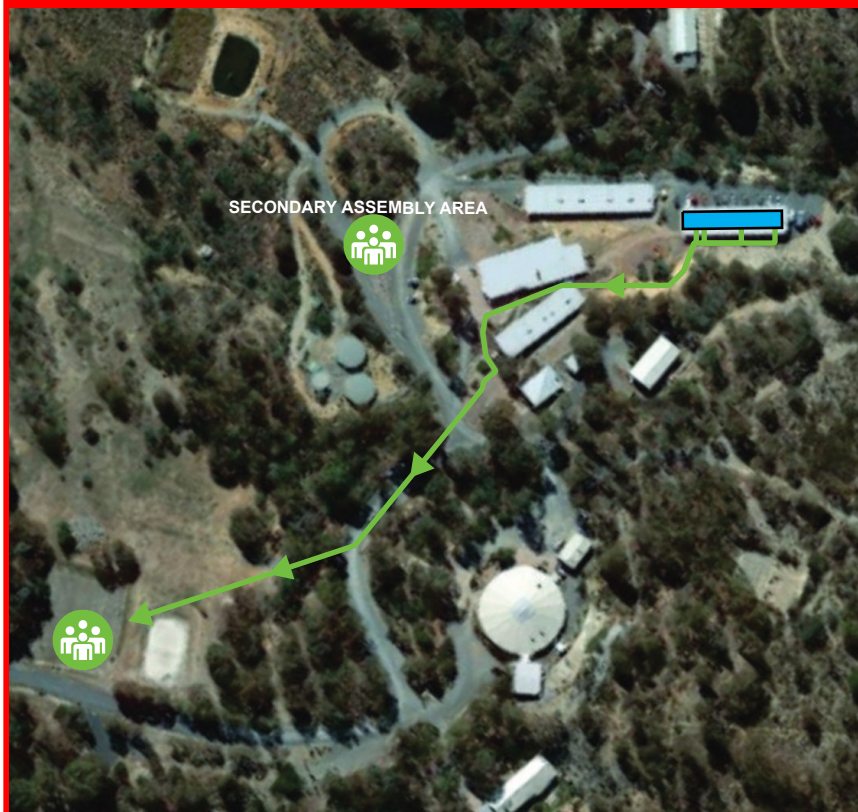
- Follow all instructions given by Wardens or Fire Officers
- Leave immediately by the nearest safe exit
- Move quickly, do not run
- If possible, close doors behind you
- Report to your designated Assembly Area
- Advise a Warden immediately if you are aware of people trapped in the building
- Do not leave the Assembly Area until the Chief Fire Warden give the 'All Clear'
- If any injuries are sustained, notify a Warden

IN CASE OF A FIRE OR EMERGENCY - Remain CALM

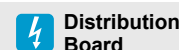
- R** REMOVE PEOPLE from immediate danger AREA
- A** ALERT nearby staff & members of the public and call 000
- C** CONFINE FIRE & SMOKE close doors and windows (if safe to do so)
- E** EXTINGUISH and control the fire (if safe to do so)
Evacuate to Assembly Area

FOR ALL EMERGENCIES
0000

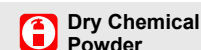
Warrambui Retreat & Conference Centre
322 Greenwood Rd, Murrumbateman NSW



Hose Reel



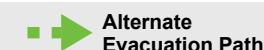
Distribution Board



Dry Chemical Powder



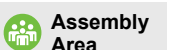
Exit Sign



Alternate Evacuation Path



Evacuation Path



Assembly Area

Issue Date: 09/2019

Review Date: 09/2024

© Dynamick Fire Installations PTY LTD

DFI Ref: AG - YAH - 4